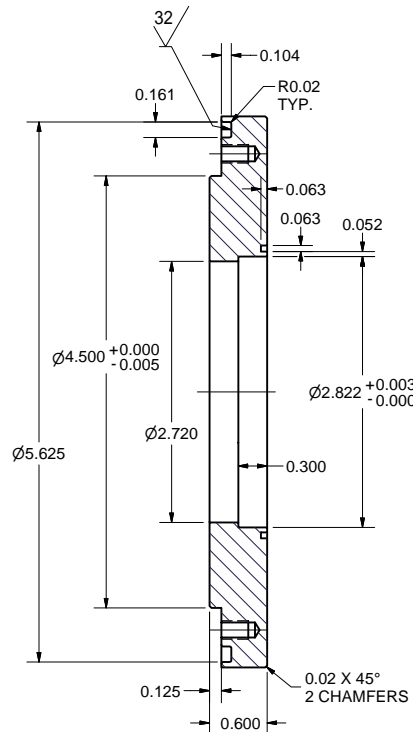
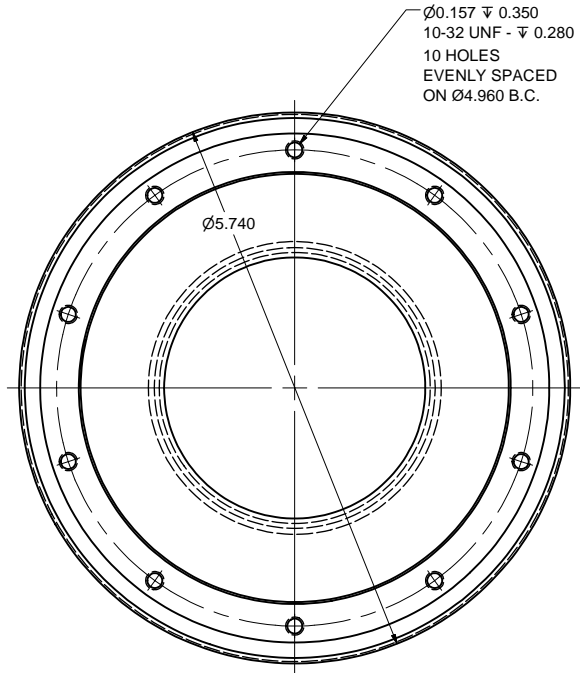
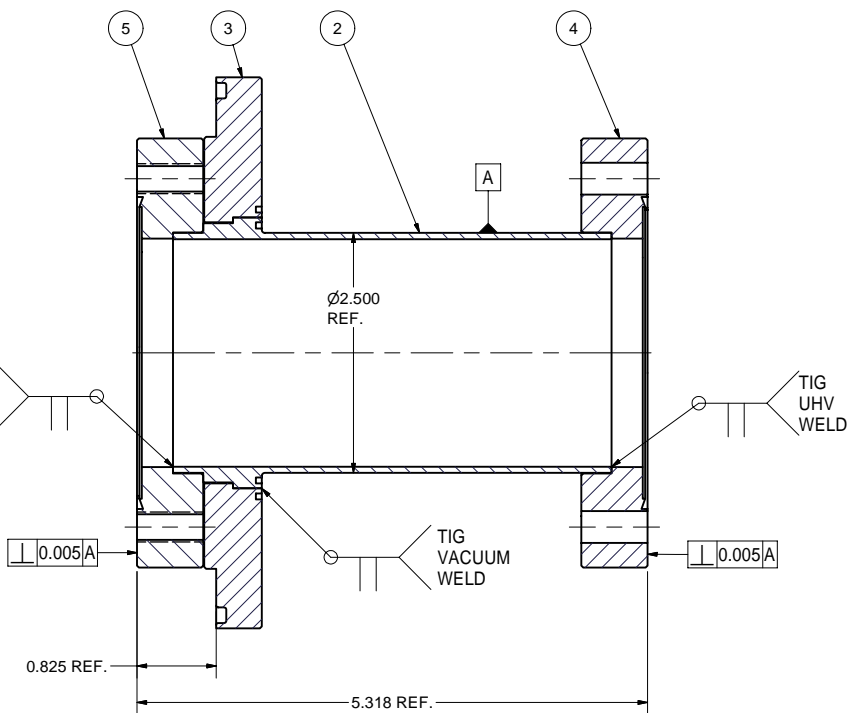
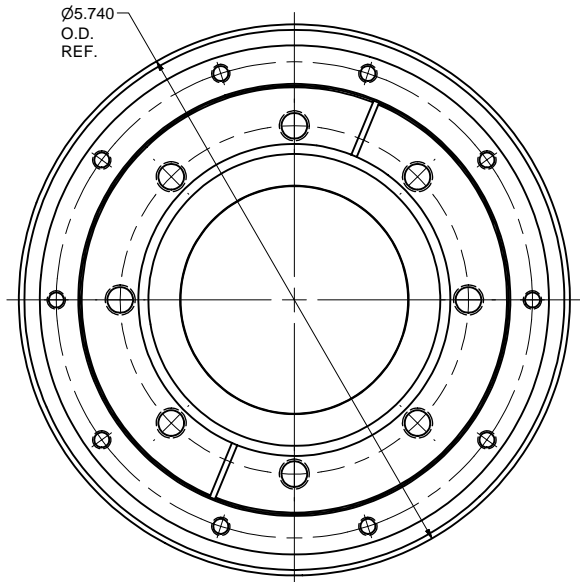
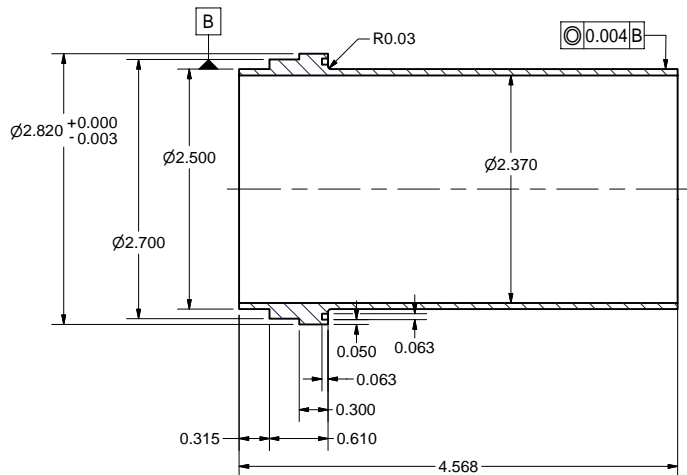
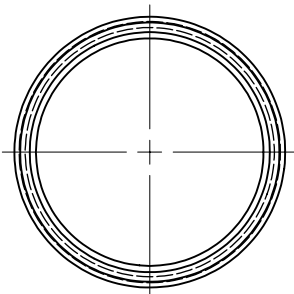


REVISIONS				
SYM.	ZONE	DESCRIPTION	DATE	APP.
A		Items 2 & 3 Mat'l was 316L St. Steel, In P.L. Items 4 & 5 Mat'l was 316L St. Steel & Chgd F-- No. JGL	5/24/07	TIO



**1 BEAM ENTRANCE VACUUM CHAMBER ASSEMBLY**  
FILE NAME: 7102-047  
SHEET NO.: 1  
DFT. SCALE: 1:1  
MATERIAL:  
QTY: 1 PER CRYOMODULE  
NOTES: 1. LEAK CHECK WELDED JOINTS. LEAK RATE:  
FOR VACUUM WELD: < 2.0 E-8 Torr-l/sec,  
FOR UHV WELD: < 2.0 E-10 Torr-l/sec.

**3 BEAM ENTRANCE CHAMBER FLANGE**  
FILE NAME: 7102-047  
SHEET NO.: 1  
DFT. SCALE: 1:1  
MATERIAL: 304L ST. STEEL  
QTY: 1 PER ASSEMBLY  
NOTES:



**2 TRANSITION TUBE 1**  
FILE NAME: 7102-047  
SHEET NO.: 1  
DFT. SCALE: 1:1  
MATERIAL: 304L ST. STEEL  
QTY: 1 PER ASSEMBLY  
NOTES:

FOR MACHINING LUBRICANT USE ONLY  
ALKALINE DETERGENT LUBRICANT CIMSTAR 40  
OR EQUIVALENT APPROVED BY CORNELL LEPP

TECHNICAL RESOURCE APPROVALS REQUIRED BEFORE FABRICATION			
	OK	DATE	N/A
DRAFTING (O'Connell):			
MACHINE SHOP (Kaminski):			
CHEMISTRY (Conklin):			
ELECTRONICS SHOP (Barley):			
FURNACE BRAZING (Sherwood):			
BEAM WELDING (Sears):			
WELDING OTHER (Gallagher):			
UTILITIES INTEGRATION (Gallagher):			
STOCKROOMS (Lockwood):			

ITEM	DWG. NO.	DESCRIPTION	G1	G2	G3	REMARKS	REV.
5	Pur.	4-1/2" CF Non-Rotatable 2.5" Tube Tapped Flange, 304L St.Steel	1			Varian's F04500250NT4, or equiv.	
4	Pur.	4-1/2" CF Non-Rotatable 2.5" Tube Flange, 304L St.Steel	1			Varian's F04500250NC4, or equiv.	
3	7102-047 (SH.1)	BEAM ENTRANCE CHAMBER FLANGE	1				
2	7102-047 (SH.1)	TRANSITION TUBE 1	1				
1	7102-047 (SH.1)	BEAM ENTRANCE VACUUM CHAMBER ASSEMBLY	X				
PLOT DATE: 5/24/2007 CAD FILE NAME: 7102-047.idw							
UNLESS OTHERWISE SPECIFIED: DIMENSIONS ARE IN INCHES: TOLERANCES ON: .00 ± .010 .000 ± .005 FRACTIONS ± 1/64 ANGLES ± 0.5° ALL SURFACES							
DRAWN BY: RHE/Di DRAWN FOR: M.Liepe DATE: 3/21/2007 SCALE: D 7102-047 SH. NO. 1 OF 1							